

Locus Map
(NOT TO SCALE)

Plan References

- 1) L.C.C. 30711 A-L
- 2) L.C.C. 4356 A-C
- 3) PLAN 298 OF 1977
- 4) PLAN 621 OF 1980
- 5) PLAN 1407 OF 1981
- 6) PLAN 1463 OF 1983
- 7) PLAN 1334 OF 1986 (4 SHEETS)
- 8) PLAN 155 OF 1986 (11 SHEETS)
- 9) PLAN 1316 OF 1987
- 10) PLAN 1183 OF 1997
- 11) PLANS 262 OF 1998
- 12) PLANS 435 OF 2005
- 13) PLAN 452 OF 2010

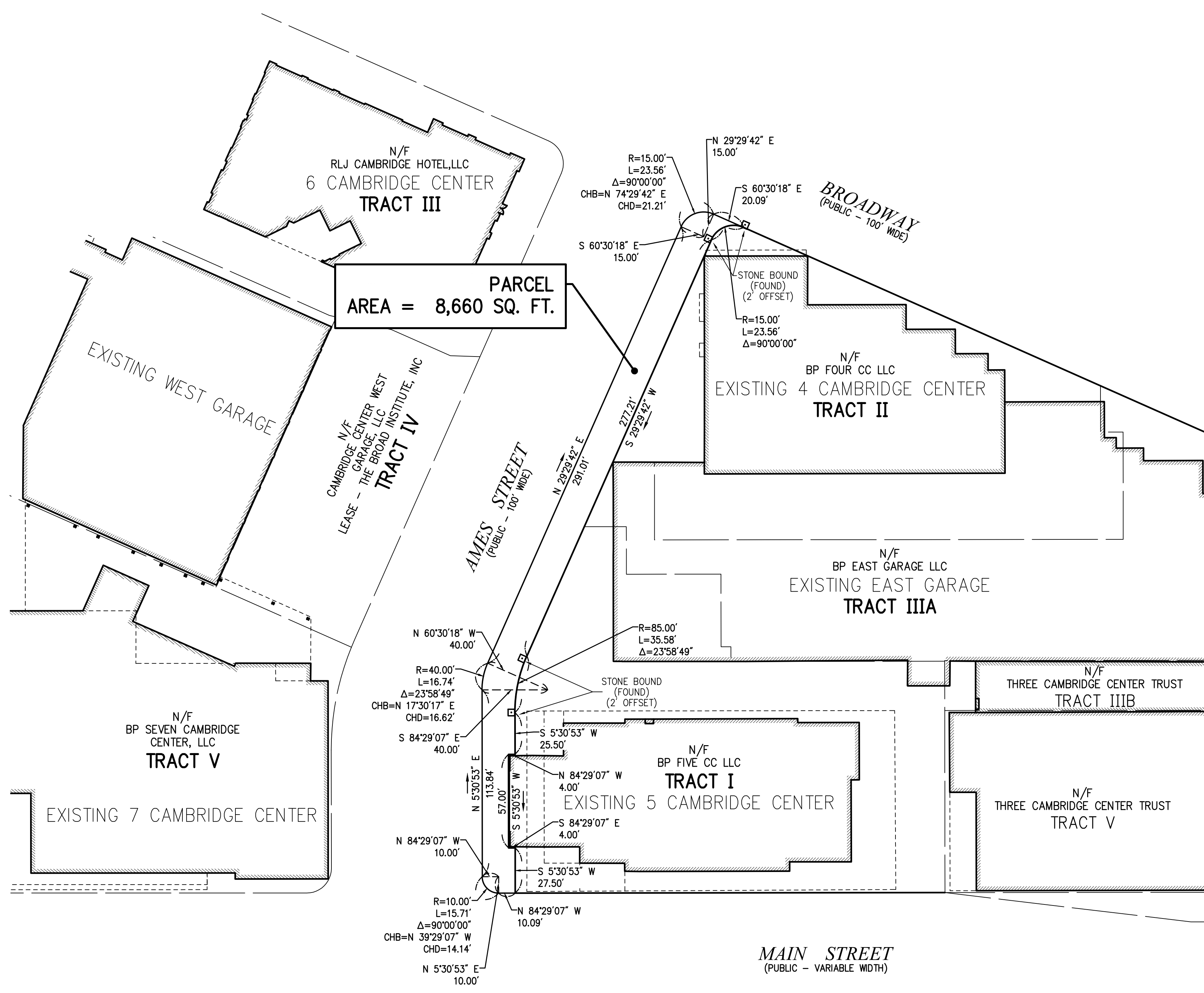
General Notes

- 1) THE PROPERTY LINES SHOWN ON THIS PLAN ARE BASED UPON AN ACTUAL FIELD SURVEY CONDUCTED BY VANASSE HANGEN BRUSTLIN, INC. IN OCTOBER, 2012 AND FROM DEEDS AND PLANS OF RECORD.
- 2) THE EXISTING CONDITIONS SHOWN ON THIS PLAN ARE BASED UPON AN ACTUAL ON-THE-GROUND INSTRUMENT SURVEY PERFORMED BY VANASSE HANGEN BRUSTLIN, INC. IN OCTOBER, 2012.
- 3) LOCATIONS OF 4 & 5 CAMBRIDGE CENTER AND CAMBRIDGE CENTER EAST GARAGE SUBSURFACE CONCRETE FOUNDATION TAKEN FROM ELECTRONIC FILE (S-361-43A-EXCOND-EMAIL-2012-06-22.DWG) SUPPLIED BY BOSTON PROPERTIES IN JUNE 2012.
- 4) HORIZONTAL DATUM IS BASED ON PLAN 621 OF 1980. ELEVATIONS SHOWN ON THIS PLAN REFER TO CAMBRIDGE CITY BASE.
- 5) THE PURPOSE OF THIS PLAN IS TO DISCONTINUE A PORTION OF AMES STREET.

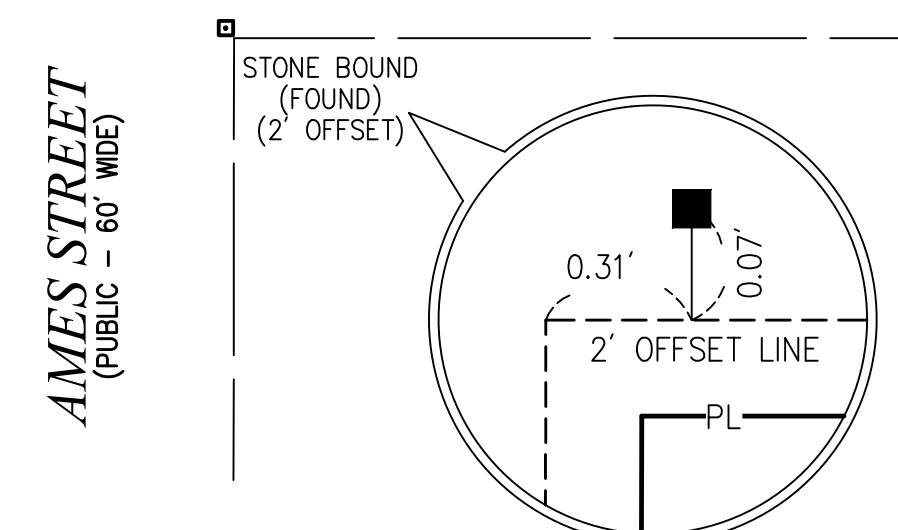
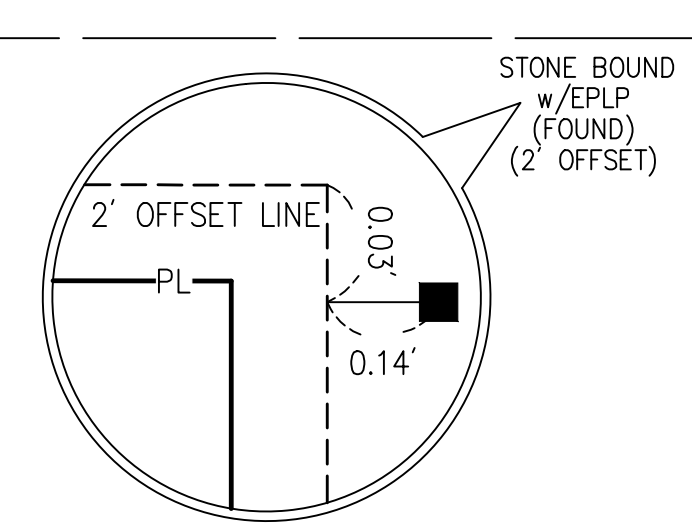
Certification

I HEREBY CERTIFY THAT THIS PLAN WAS PREPARED IN ACCORDANCE WITH THE RULES AND REGULATIONS OF THE REGISTERS OF DEEDS OF THE COMMONWEALTH OF MASSACHUSETTS.

DATE _____ PROFESSIONAL LAND SURVEYOR _____



PARCEL
AREA = 8,660 SQ. FT.



RESERVED FOR REGISTRY USE ONLY

MARK JUNGHANS, P.E.

CITY OF CAMBRIDGE

Prepared by: **Vanasse Hangen Brustlin, Inc.**
Transportation
Land Development
Environmental Services
101 Walnut St., P.O. Box 9151
Watertown, MA 02471
617 924 1770 • FAX 617 924 2286

Computed by: C. ROBERTSON
Traced by: C. ROBERTSON
Checked by: M. JUNGHANS

Discontinuance Description

PLAN SHOWING THE DISCONTINUANCE OF A PORTION OF AMES STREET (8,660 S.F.) LOCATED BETWEEN MAIN STREET AND BROADWAY.

CITY OF CAMBRIDGE PUBLIC WORKS DEPARTMENT
ENGINEERING DIVISION
DISCONTINUANCE PLAN

**AMES STREET
CAMBRIDGE**

DATE: JULY 20, 2014 SCALE: 1"=40' SHEET 1 OF 1

DIVISION (CITY) ENGINEER