

CAMBRIDGE

GoGreen Awards

2011



CATEGORY: Stormwater Management / Large Property

THE BULFINCH COMPANIES, INC. Cambridge Discovery Park

ACCOMPLISHMENTS

The redevelopment of Cambridge Discovery Park transformed a former parking lot and impervious area into a natural vegetative buffer between the Little River and the developed portion of the property. The stormwater management design for Cambridge Discovery Park was developed to take advantage of nature's treatment efficiency with the creation of a Pocket Wetland in accordance with the Massachusetts Stormwater Handbook guidelines. The Pocket Wetland provides areas of low and high marsh zones, as well as, areas of deep water to support stormwater management treatment and provide natural habitat adjacent to the Little River. Additional benefits from the stormwater management system include:

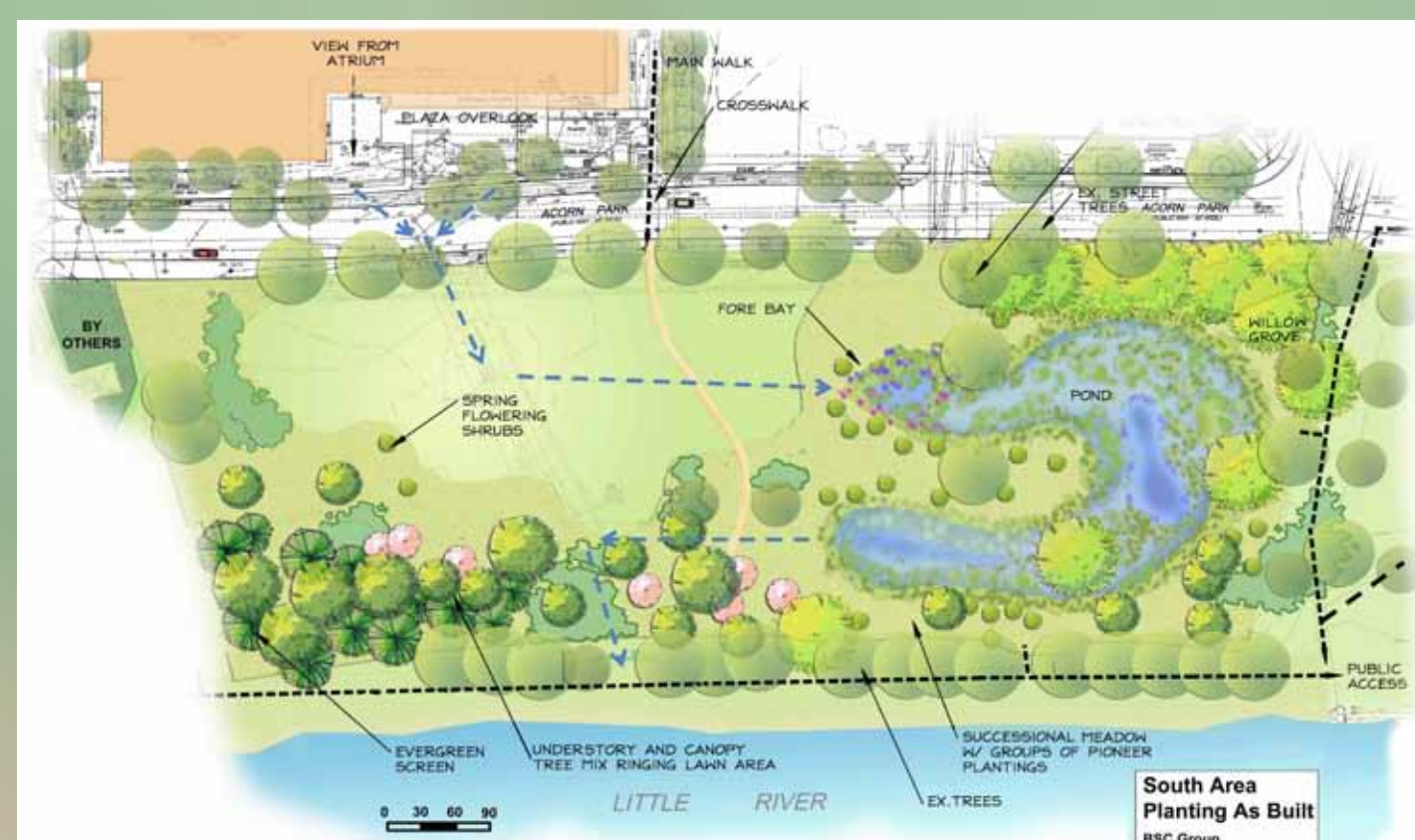
- Reduces peak stormwater discharge rates and volumes for the 2-year storm event to below pre-development conditions.
- Increases groundwater infiltration
- Maximizes green space closest to the Little River.
- Provides native plant species to support surrounding habitat.
- Achieves LEED credits for treatment and reduction in stormwater runoff.

ABOUT THE BULFINCH COMPANIES, INC.:

The Bulfinch Companies, Inc. is an entrepreneurial, value-added real estate investment firm specializing in the development, acquisition, management, and repositioning of commercial properties in greater Boston. Since inception in 1936, Bulfinch has developed, acquired and repositioned in excess of \$1 billion of commercial, industrial and retail properties. As a member of the U.S. Green Building Council, Bulfinch actively engages in green building, sustainability and efficient and effective use of energy and materials. All of Bulfinch's recent developments are LEED® Certified or currently undergoing the LEED certification process, including Trapelo Corporate Center in Waltham, Massachusetts (LEED Gold), and Cambridge Discovery Park, Cambridge, Massachusetts (undergoing LEED certification process). Bulfinch is committed to constructing all of its buildings to attain LEED certification.

FOR MORE INFORMATION:

Please contact BSC Group, David Biancavilla, P.E., LEED AP at 617-896-4300 or email at DBiancavilla@BSCGroup.com.



ABOUT THE GO GREEN AWARD

The City of Cambridge annually recognizes local businesses and organizations for outstanding practices in transportation, waste reduction and recycling, energy, stormwater management, climate protection, and community sustainability. The awardees make significant contributions to the reduction of the carbon footprint of Cambridge and to making the city more sustainable.