



CATEGORY: Energy / Large Employer

SHADY HILL SCHOOL 178 Coolidge Hill

ACCOMPLISHMENTS

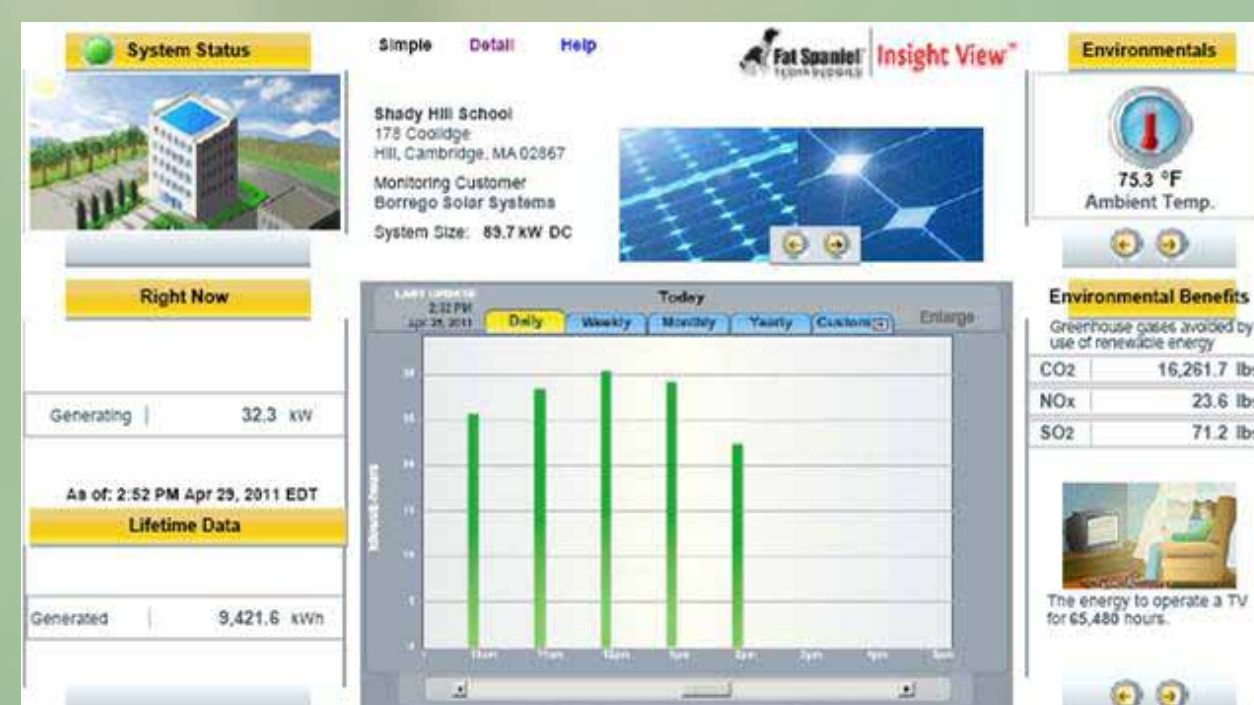
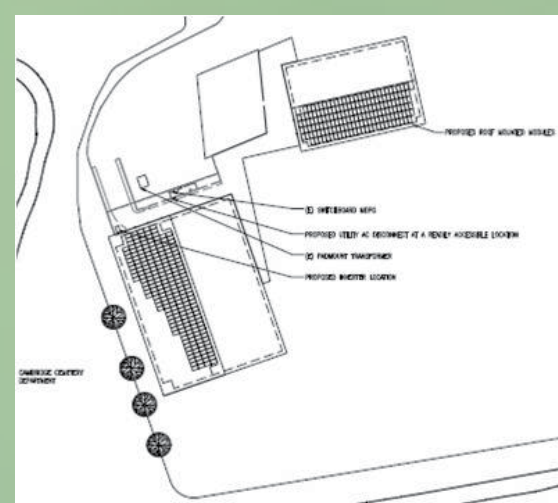
- Implemented energy efficiency improvement projects including a lighting retrofit worth \$158,000. The school's Energy Management System enables efficient control strategies including night and unoccupied period space temperature setbacks and hot water temperature reset. A new high-efficiency condensing boiler was installed.
- The new gymnasium and arts buildings received LEED Silver certifications and include highly energy-efficient building systems.
- Installed an 89.7 kilowatt solar photovoltaic system through a power purchase agreement (PPA) that enables the project to take advantage of tax incentives that would otherwise not be accessible to a non-profit institution and Solar Renewable Energy Certificates (SRECs). Shady Hill School reached out to a nearby school to form a partnership to increase negotiating leverage with the PPA provider. The system is expected to generate about 104,900 kilowatt hours of electricity annually, which would displace approximately 18% of the school's grid electricity purchase, and save the school about \$3,000 per year in electricity costs.

ABOUT SHADY HILL SCHOOL:

Shady Hill School is an independent coeducational school with 500 students in grades pre-kindergarten through grade 8. The campus consists of 15 mostly wood-frame buildings that range from 10 to 50 years old and comprise 78,000 square feet, plus a large new gymnasium complex with underground parking and an arts center built in 2008 that comprise another 75,000 square feet.

FOR MORE INFORMATION:

Please contact contact Elizabeth Reid at (617) 520-5216 or Elizabeth_reid@shs.org.



ABOUT THE GO GREEN AWARD

The City of Cambridge annually recognizes local businesses and organizations for outstanding practices in transportation, waste reduction and recycling, energy, stormwater management, climate protection, and community sustainability. The awardees make significant contributions to the reduction of the carbon footprint of Cambridge and to making the city more sustainable.