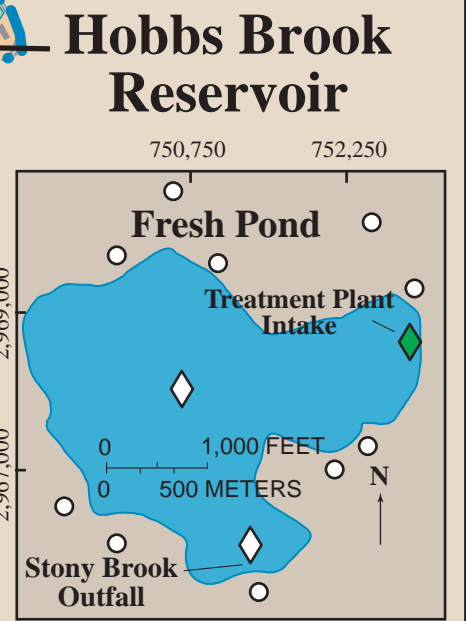
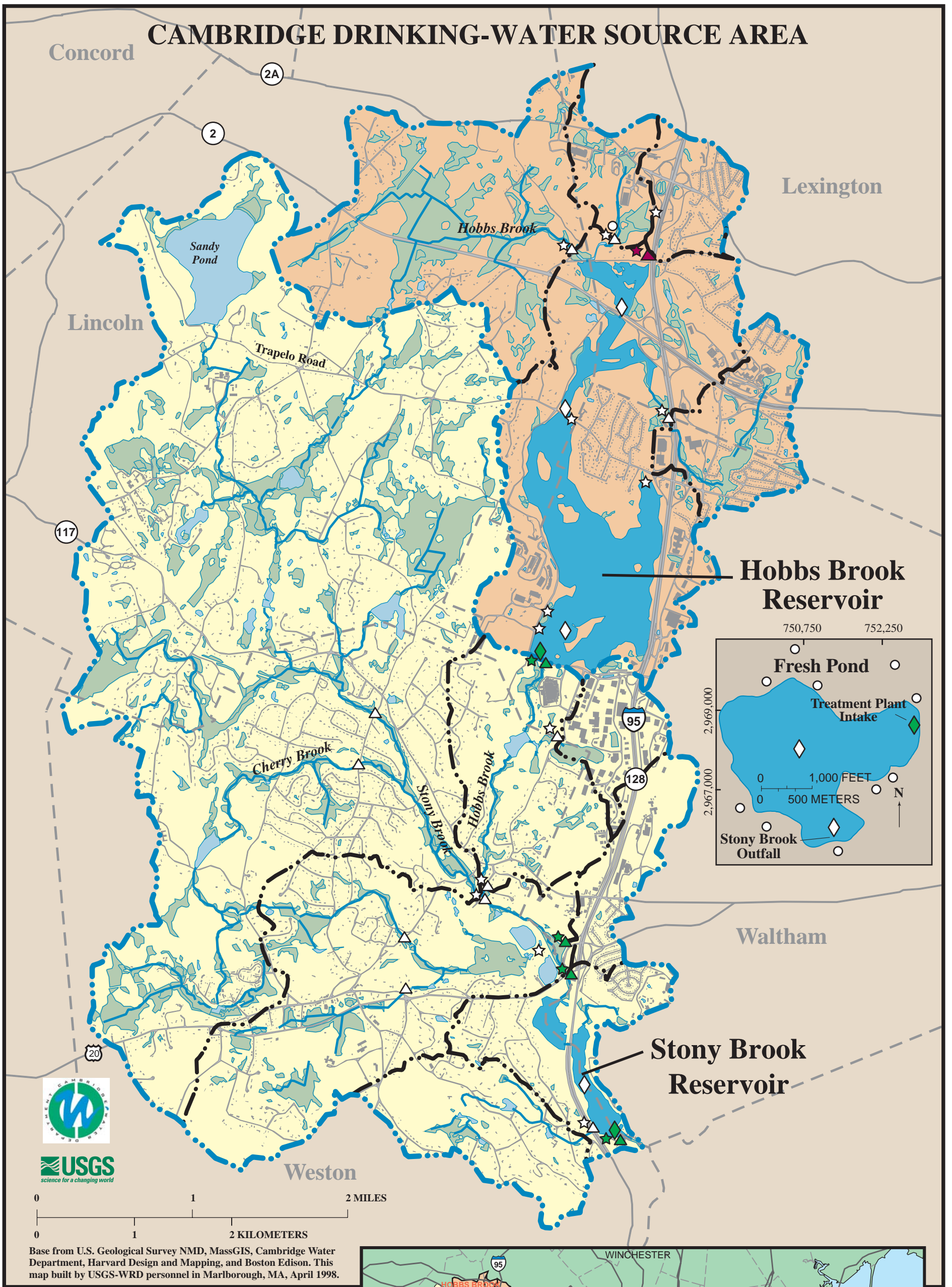
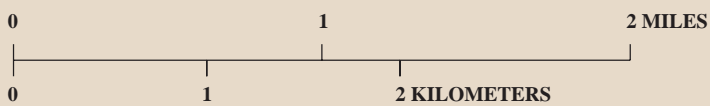


# CAMBRIDGE DRINKING-WATER SOURCE AREA



**USGS**  
science for a changing world



Base from U.S. Geological Survey NMD, MassGIS, Cambridge Water Department, Harvard Design and Mapping, and Boston Edison. This map built by USGS-WRD personnel in Marlborough, MA, April 1998.

## EXPLANATION

### BASINS

- Wetlands
- Hobbs Brook Reservoir Drainage Basin
- Stony Brook Reservoir Drainage Basin
- Basin Boundary
- Subbasin Boundary

### MONITORING-STATION SYMBOLS—Color denotes sampling method used

- Routine Reservoir-Monitoring Station
- Routine Tributary-Stream-Monitoring Station
- Storm-Event-Monitoring Station
- Ground-Water Monitoring Station
- Manually-Sampled Site
- Automated Continuously-Monitored Site
- Automated Continuously-Monitored Site with Internet Access (<http://waterdata.usgs.gov/ma/nwis/current/?type=quality>)

